

RSW Catcher-Trawlers



152' RSW Catcher-Trawler

Overall Dimensions

Length..... 156'-7" (47.7 m)
Breadth..... .44'-0" (13.4 m)
Draft, molded... 21'-0" (6.4 m)

Horsepower

1 x 5600—6500 HP

Bollard Pull

75-80 ST

Fuel Oil

198,000 gallons

Fresh Water

92,300 gallons

UREA

20,000 gallons

RSW Tanks (Fish Load)

337 MT

Crew

9

182' RSW Catcher-Trawler

Overall Dimensions

Length..... 186'-7" (56.9 m)
Breadth..... .44'-0" (13.4 m)
Draft, molded... 21'-0" (6.4 m)

Horsepower

1 x 5600—6500 HP

Bollard Pull

75-80 ST

Fuel Oil

198,000 gallons

Fresh Water

92,300 gallons

UREA

20,000 gallons

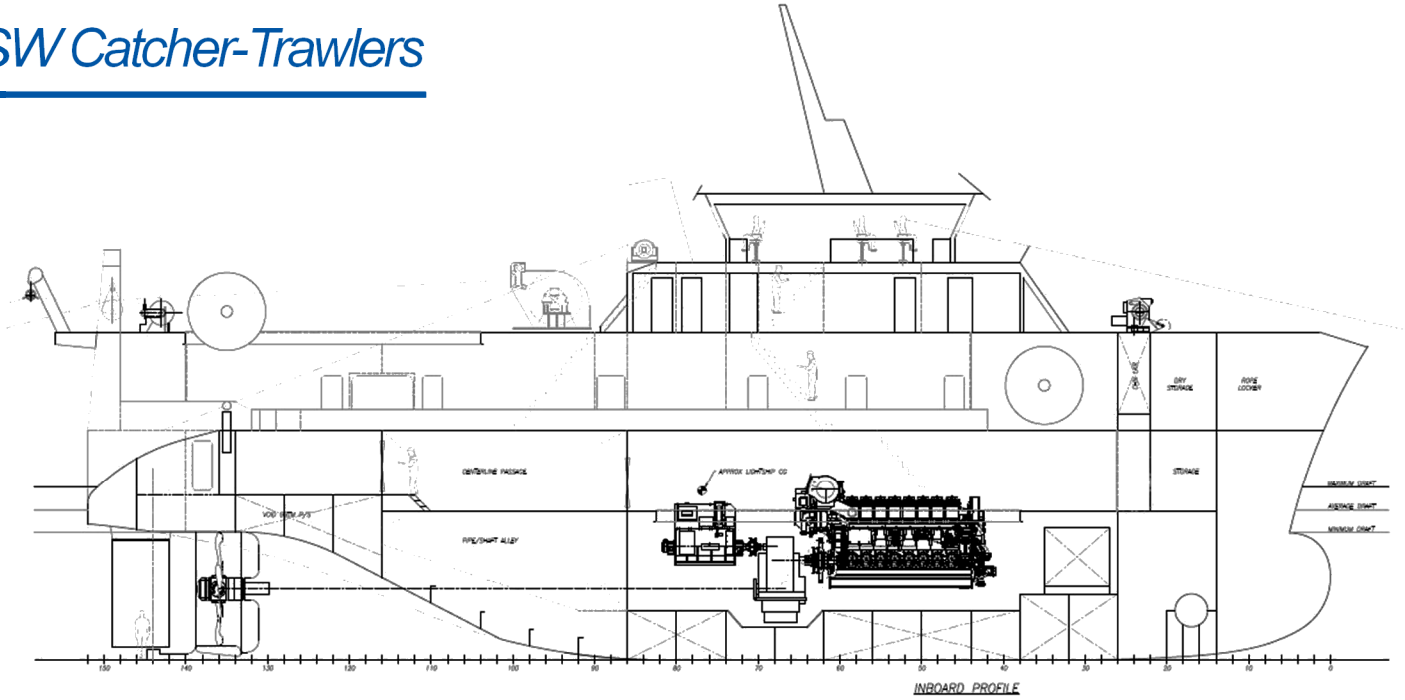
RSW Tanks (Fish Load)

798 MT

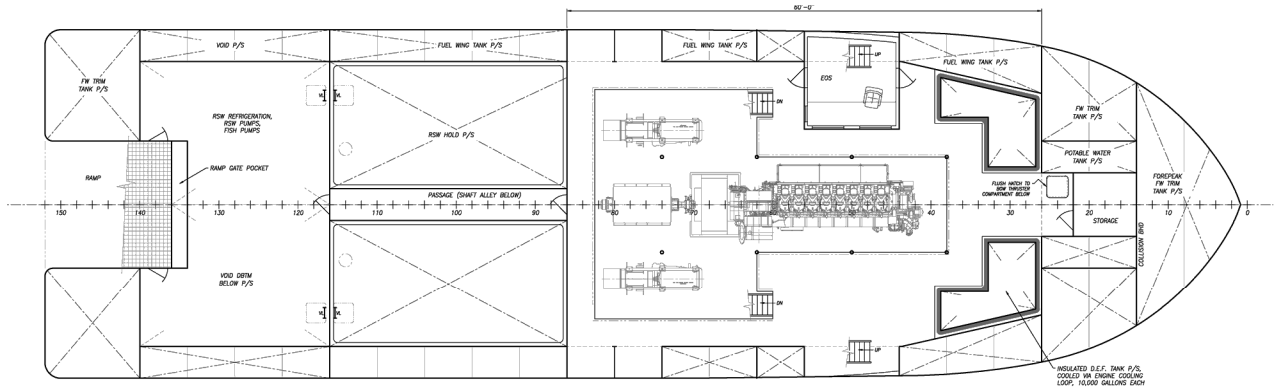
Crew

9

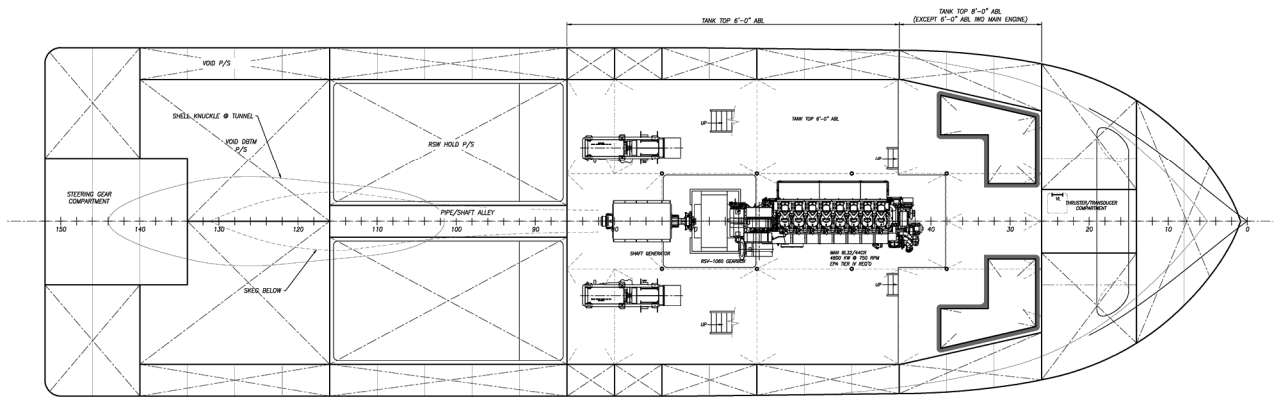
RSW Catcher-Trawlers



INBOARD PROFILE



HULL UPPER LEVEL



HULL LOWER LEVEL